



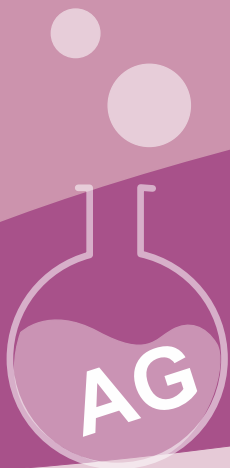
CLOMAZONE 360 CS

Herbicide



A capsule suspension herbicide for the residual control of a range of annual weeds in potatoes and carrots.

Active Ingredients:
Clomazone 36%
Product Type:
Capsule Suspension
(CS)



CLOMAZONE 360 CS

HERBICIDE



Method of use:

Crop	Weed	Rate of use (max. ind. dose)	PHI/ days
potatoes	Broad-leaved weeds	0.25 L / Ha	-
Carrots	Broad-leaved weeds	0.25 L / Ha	-

Time of Application: CIBA Clomazone should be applied as soon as possible following sowing of the crop and before emergence of both the crop and target weeds.