

SULFOXAFLOR 120 SC

Insecticide



Fast-acting insecticide from a new class of chemistry that controls sap-feeding insects, such as tarnished plant bugs and aphids on a wide range of crops.

Active Ingredients:
Sulfoxaflor 12%
Product Type:
Suspension
Concentrate (SC)

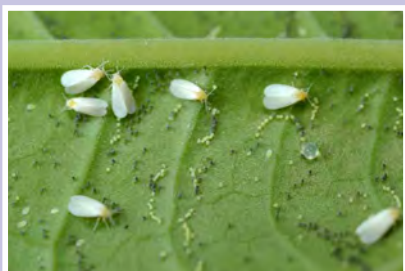
Agromec

www.agromec-international.com



SULFOXAFLOL 120 SC

INSECTICIDE



Method of use:

Crop	Pest	Rate of use	PHI/ days
Pome fruit	Aphids, Scales	0.4 L / Ha	7
Brassicas	Aphids	0.2 L / Ha	7
Curcubits	Whiteflies, aphids	0.2- 0.4 L / Ha	1
Citrus Fruits	scales, Aphids.	0.2- 0.4 L / Ha	7
Peaches and Nectarine Cherries	Scales, Aphids	0.2- 0.4 L / Ha	7
Potatoes	Aphids	0.2-0.4 L / Ha	7
Tomato, Eggplant, Pepper	Whiteflies, Aphids	0.2-0.4 L / Ha	1
Leafy Greens Vegetables	Aphids	0.2 L / ha	7
Ornamentals,	Whiteflies, Aphids	0.2-0.4 L / Ha	-