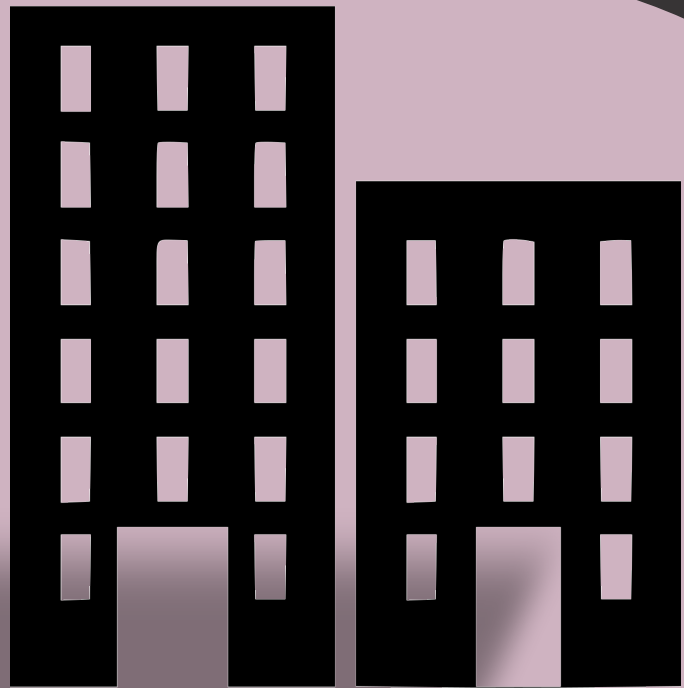




ALPHA CYPERMETHRIN 100 SC

PUBLIC
HEALTH



INSECTICIDE

A high performance, residual insecticide for the control of mosquitoes, houseflies and cockroaches for longer duration. It is suitable for use in domestic and institutional premises & public buildings. It is of low toxicity to humans.

Active Ingredients:
Alpha-Cypermethrin 10%
Product Type:
Suspension concentrate
(SC)

Agromec

www.agromec-international.com



ALPHA CYPERMETHRIN 100 SC

INSECTICIDE



Method of use:

Controls crawling and flying insects.

Dosage:

-Adult mosquitoes: 10 to 20 ml/L of water to cover 50 m² area (20 to 40 mg a.i /m²)

-Adult Houseflies, Cockroaches: 10 to 20 ml/L of water to cover 50 m² area (20 to 40 mg a.i /m²)